



„ahead“

SIOEN

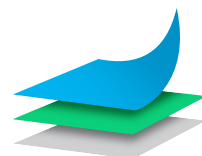


## *Black X-Tech*

Imagine you have developed a bestseller and then take this product even further and create a most desirable line for serious racers in boats up to 50'. We did exactly this. Based on our successful Aramid X-Tech Line, the BX Line fabrics are at the forefront of the trend towards a more balanced base construction for warp-oriented laminates. This hybrid innovation combines the strengths of similar fibres to create a long-lasting fabric, which will meet the highest demands of ambitious owners and their crews. The BX Line fabrics' convincing properties are achieved by the forward-looking technology behind them: The base 0-90 Technora® black scrims in this line are fill oriented for a superior luff to leech strength, the decisive factor for an increased lifespan of roller furling and overlapping headsails. Additionally, the characteristic Technora® black yarn offers high flex and impact durability due to its high tenacity. In combination with the black Aramid warp fibres providing a load-line strength in tri-radial construction, the BX Line fabrics are true multi talents to successfully be operated on the highest racing level. And just like the best sunglasses are protecting your eyes, the black dye increases UV resistance over the longer life of the sail.

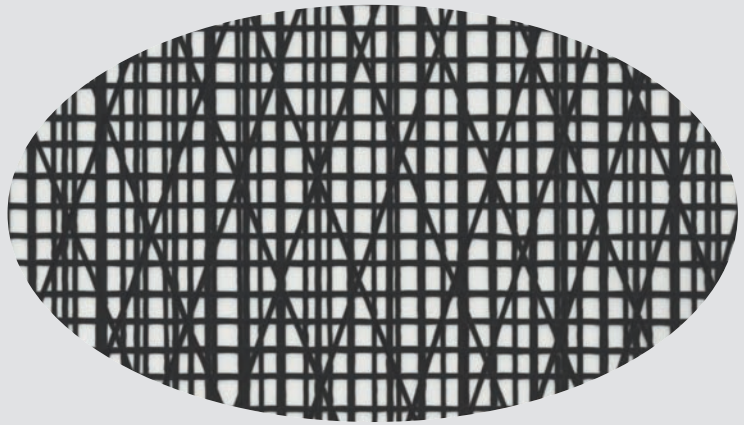


The leading sailcloth manufacturer. Innovation since 1966  
[dimension-polyant.com](http://dimension-polyant.com)



*dimension  
polyant*

Boat Length	Application	Black X-Tech
20 - 25 feet	Mainsail Light #1 #1 #2 #3	BX10 / BX05 BX05 BX05 BX05 BX10 / BX05
26 - 30 feet	Mainsail Light #1 #1 #2 #3	BX10 / BX05 BX05 BX10 / BX05 BX10 / BX05 BX10
31- 35 feet	Mainsail Light #1 #1 #2 #3	BX15 / BX10 BX10 / BX05 BX15 / BX10 BX15 / BX10 BX15
36 - 40 feet	Mainsail Light #1 #1 #2 #3	BX20 / BX15 BX15 / BX10 BX20 / BX15 BX20 / BX15 BX20
41 - 45 feet	Light #1 #1	BX15 BX20 / BX15



#### GENERAL NOTE

All suggestions are based on our worldwide experience with sailcloth applications. Please note that the recommendations are meant as guidelines. You should consider, when making your choice, if the sail will be used in a particular heavy or light wind area.

Neither Dimension-Polyant nor any of its affiliates assume any liability for special, incidental or consequential damages due to the recommendation given.

#### HIGHEST QUALITY FROM THE START

Dimension-Polyant uses only performance high tenacity fibers, customdeveloped chemicals as well as premium films from qualified suppliers.

#### IN-HOUSE MANUFACTURING

Dimension-Polyant is worldwide the sole producer of high quality sailcloth with its own in-house manufacturing. As sailcloth is our only product we have invested in customized equipment for weaving, finishing and laminating.

#### CONTINUOUS INNOVATION

Dimension-Polyant has the most dedicated R&D team, the state-of-the-art facilities and preferred access to the newest fibers, chemicals and components. Together with German and American engineering this provides the base for trend setting developments.

#### GLOBAL REACH

Our worldwide distribution and technical support network makes Dimension-Polyant the perfect partner for your sail-maker.